

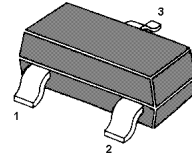
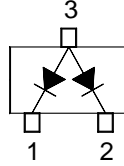
BAW56

Features

- Small package
- Low forward voltage
- Fast reverse recovery time
- Small total capacitance

Applications

- Ultra high speed switching application



SOT-23 Plastic Package

Absolute Maximum Ratings ($T_a = 25\text{ }^\circ\text{C}$)

Parameter	Symbol	Value	Unit
Peak Repetitive Reverse Voltage	V_{RRM}	85	V
Continuous Reverse Voltage	V_R	75	V
Forward Current (DC)	Single Diode Loaded	215	mA
	Double Diode Loaded	125	
Repetitive Peak Forward Current	I_{FRM}	450	mA



BAW56

Silicon Epitaxial Planar Switching Diode

Typical Characteristics

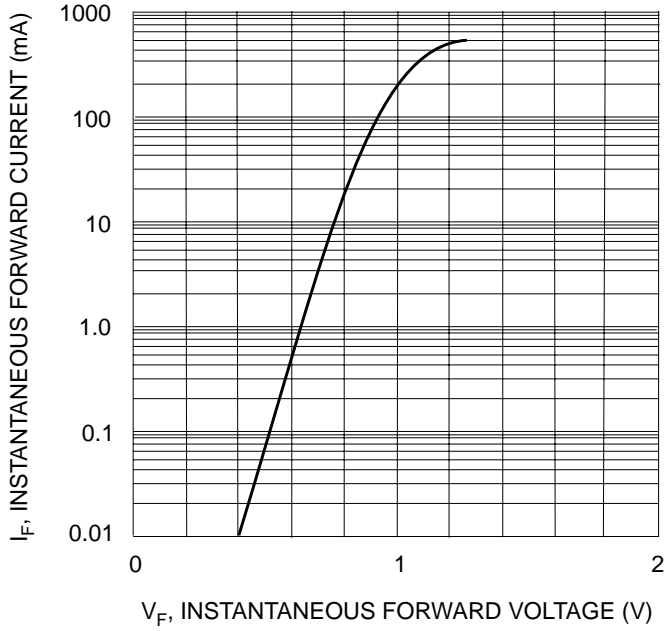


Fig. 1 Forward Characteristics

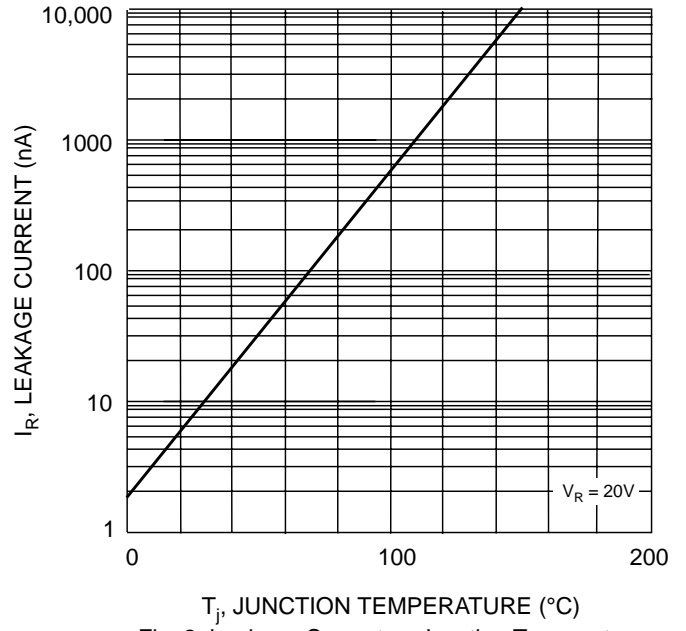


Fig. 2 Leakage Current vs. Junction Temperature

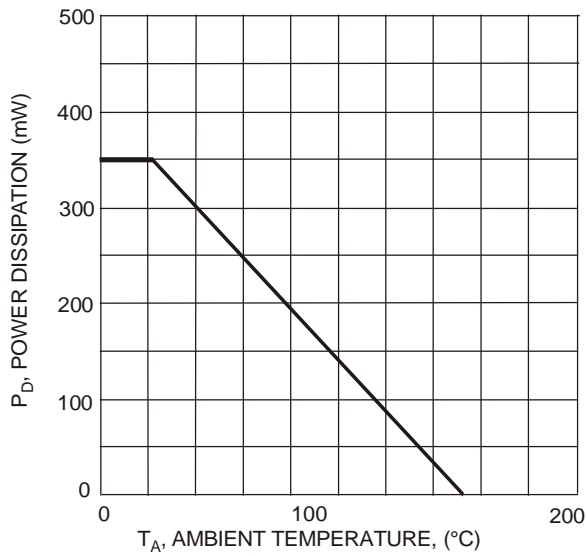
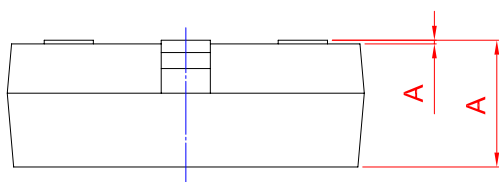
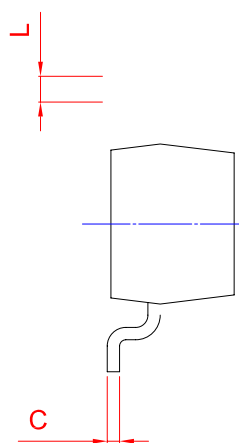
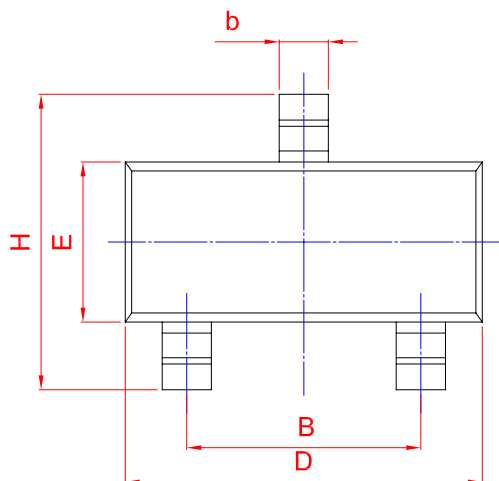
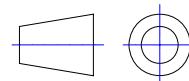


Fig. 3 Power Derating Curve, Total Package



					D	E		A ₁	
mm	1.40		0.50	0.19	3.16				
	0.95		0.35	0.08	2.70				