



一级代理商：

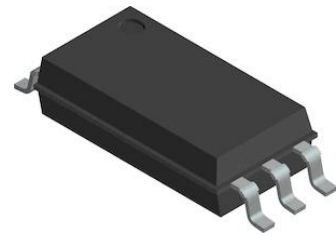
深圳市弗瑞鑫电子有限公司

地址：深圳市宝安区西乡大道302号金源商务大厦B座三楼

frxelec

Features

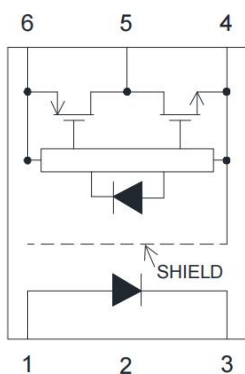
:
:



Description

Application Range

Functional Diagram



- 1. Anode
- 3. Cathode
- 4. GND
- 5. Vo (Output)
- 6. Vcc



Absolute Maximum Ratings (Ta=25°C)

Parameter	Symbol	Rated Value	Unit
		~	
		~	



Electrical Optical Characteristics at Ta=25°C

Parameter	Symbol	Min.	Typ.	Max.	Units	Test Conditions
						<

Switching Characteristics

Parameter	Symbol	Min.	Typ	Max.	Units	Test Conditions



Order Information

Part Number

OR-314(B)U-Y-Z

Note

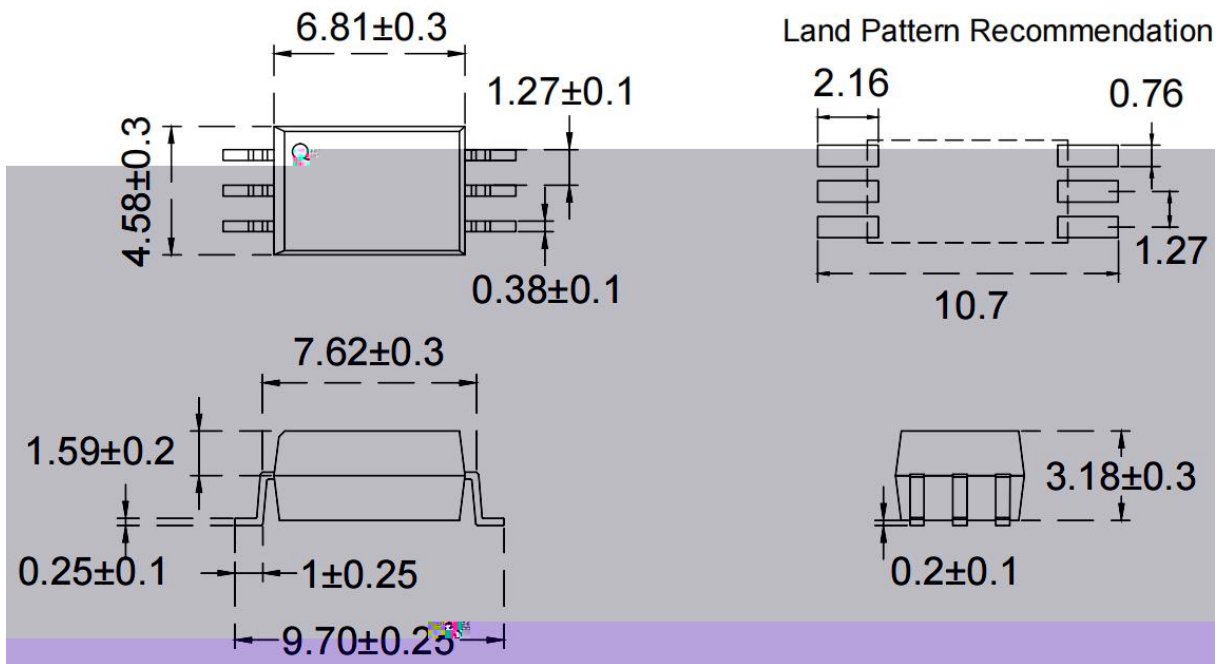
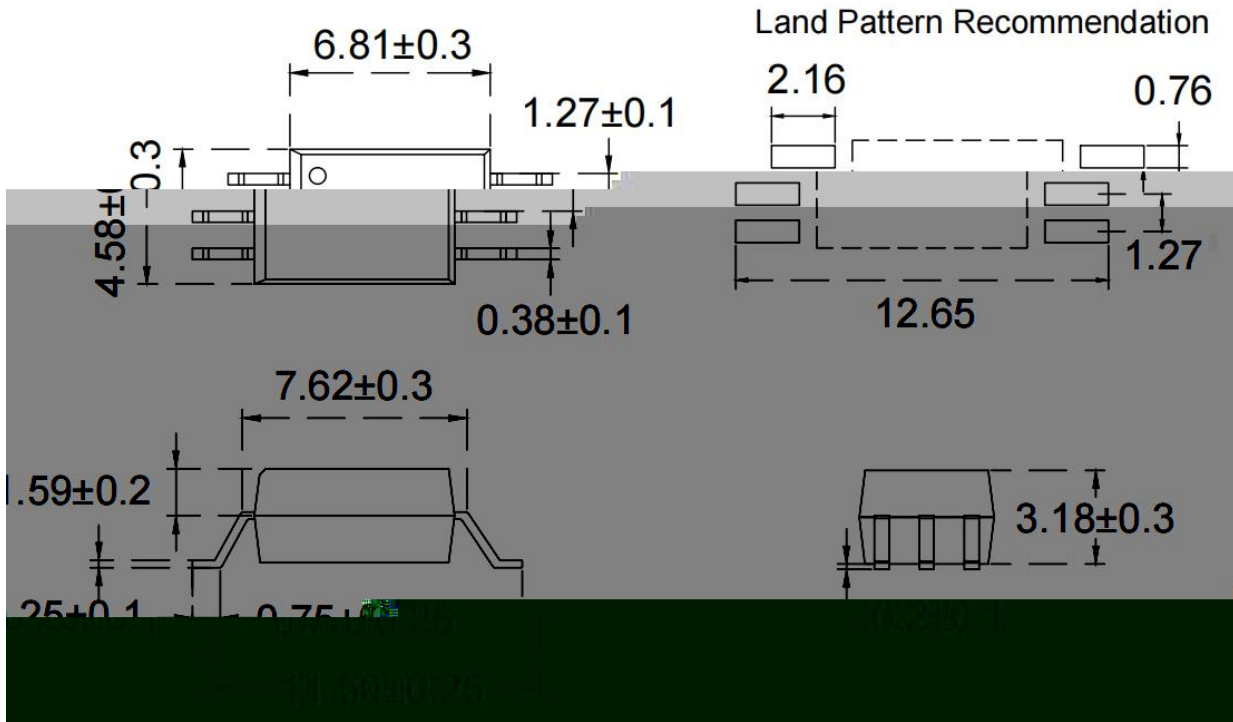
Option	Description	Packing quantity

B's

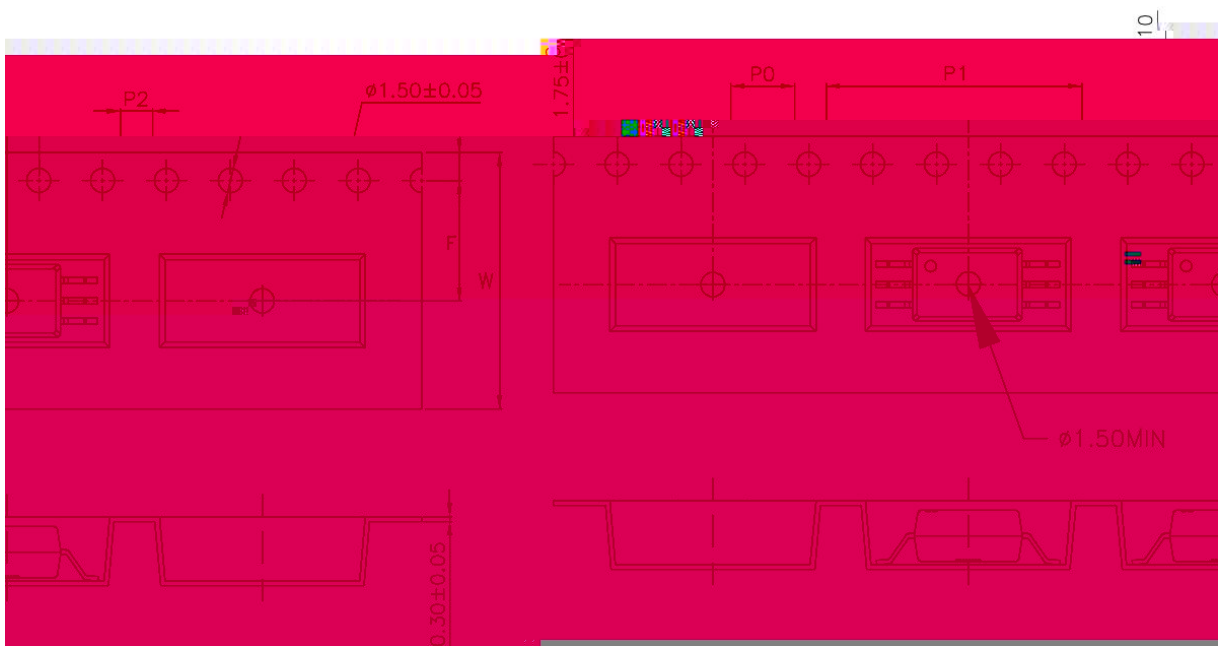
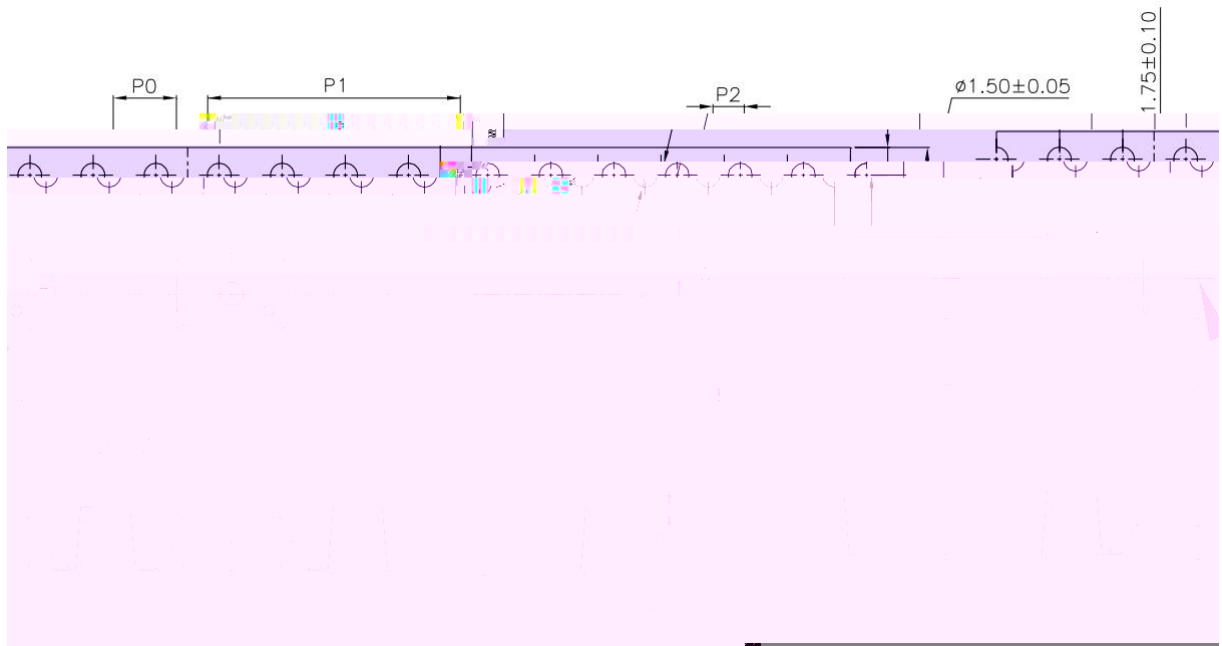
Naming

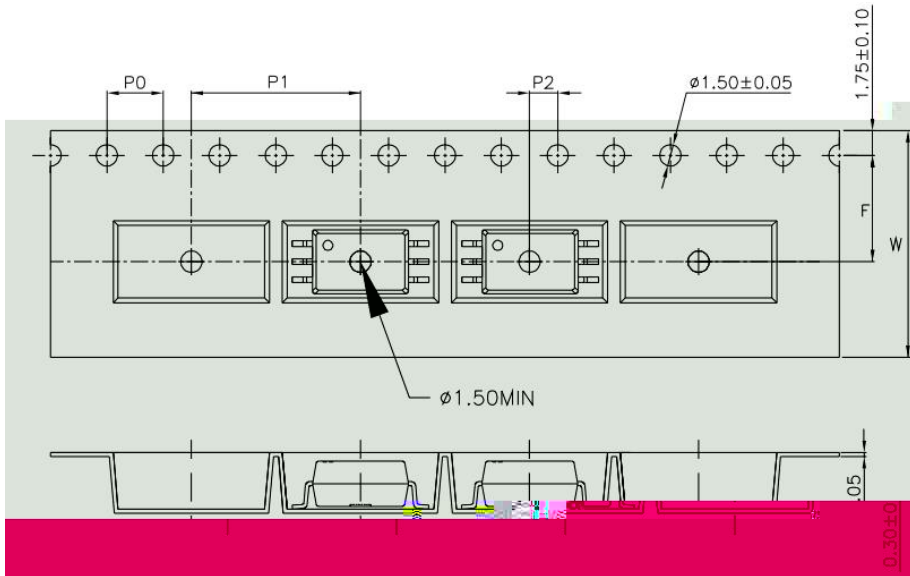
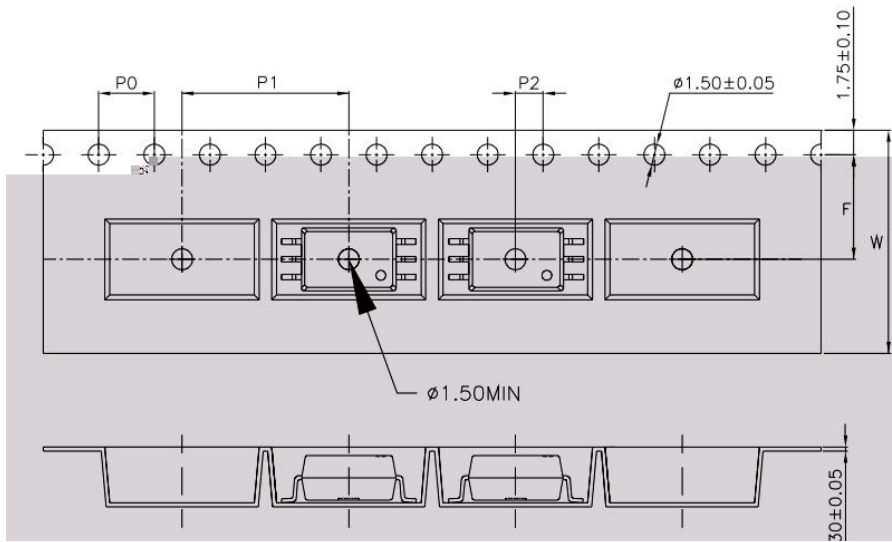
Q's
P's
V's

Package Dimension



Taping Dimensions





		Dimension in mm (inch) For W type	Dimension in mm (inch) For W1 type

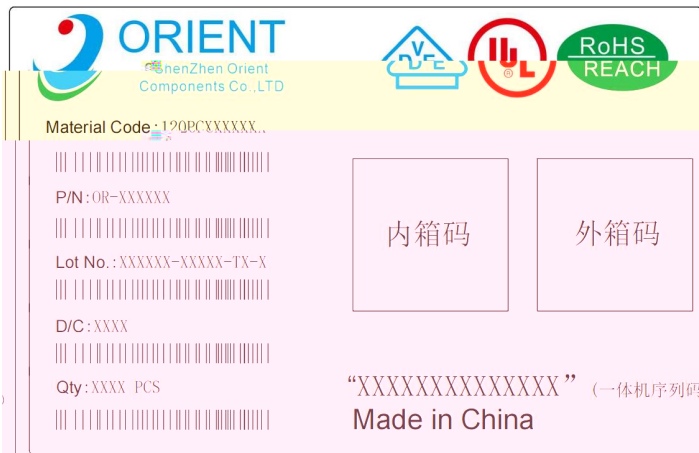
()	

Package Dimension

(1) package dimension

Packing Information	

(2) Packing Label Sample



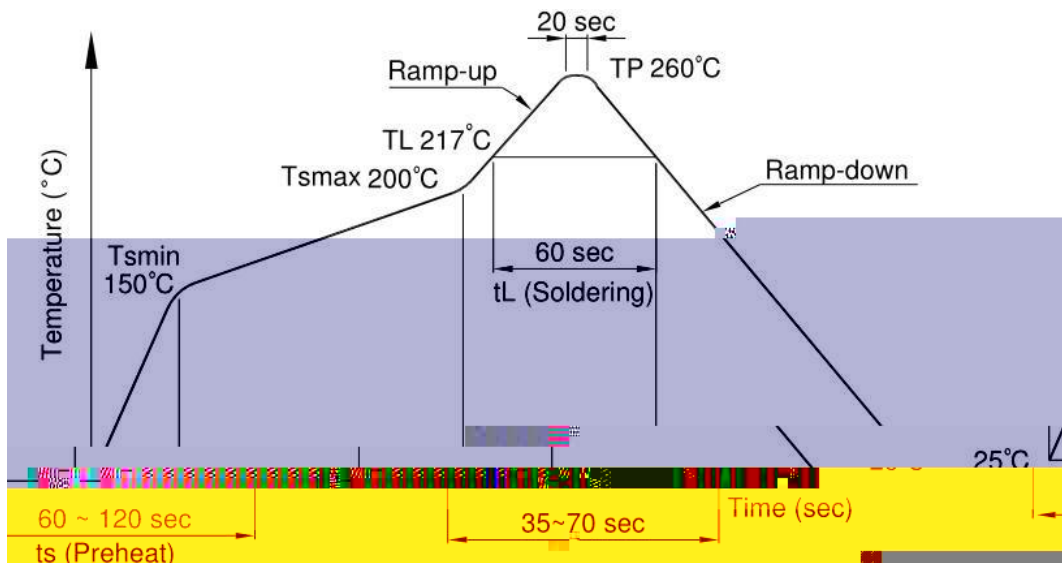
The image shows a sample packing label with the following content:

- ORIENT** Shenzhen Orient Components Co., LTD
- Material Code: 120PCXXXXXX
- P/N: OR-XXXXXX
- Lot No.: XXXXX-XXXXX-7X-X
- D/C: XXXX
- Qty: XXXX PCS
- RoHS REACH logo
- UL logo
- 内箱码 (Inner Box Code)
- 外箱码 (Outer Box Code)
- “XXXXXXXXXXXXXXXX” (一体机序列码) (Monoblock Serial Number)
- Made in China

Note:

Temperature Profile Of Soldering

Profile item	Conditions





(3) .Wave soldering (JEDEC22A111 compliant)



CHARACTERISTICS CURVES (TYPICAL PERFORMANCE)

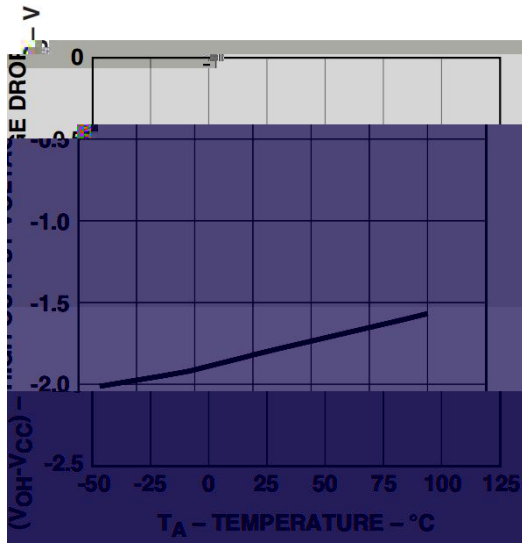


Figure 1. V_{OH} vs. Temperature.

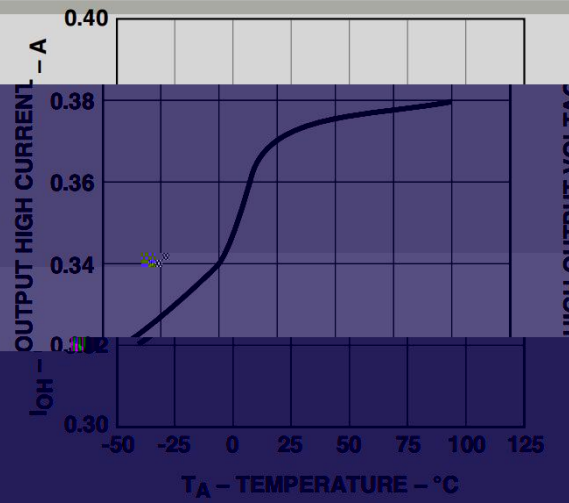


Figure 2. I_{OH} vs. Temperature.

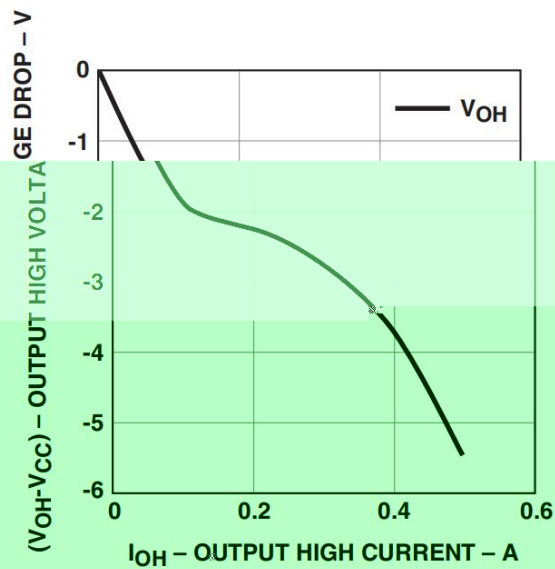


Figure 3. V_{OH} vs. I_{OH} .

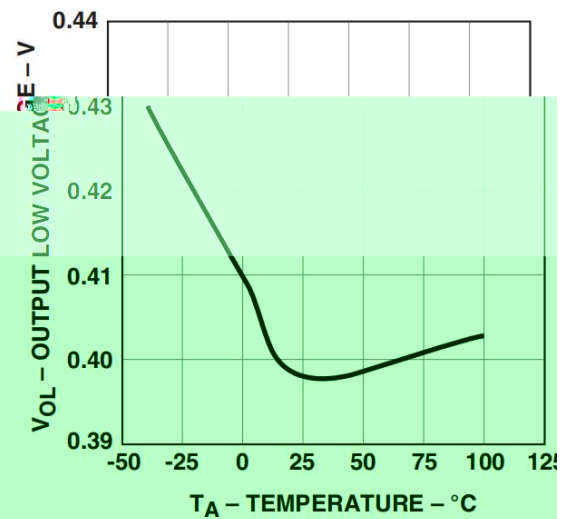


Figure 4. V_{OL} vs. Temperature.

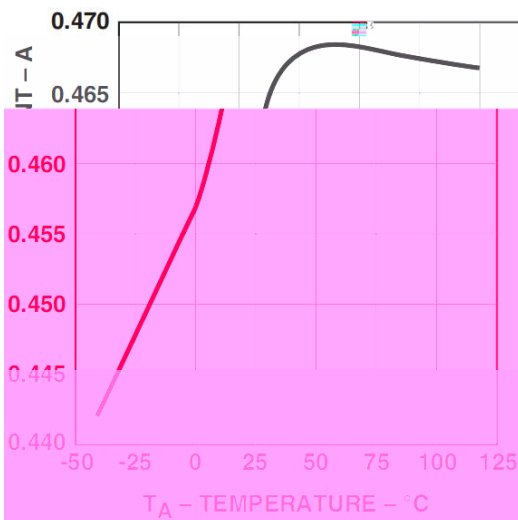


Figure 5. I_{OL} vs. Temperature.

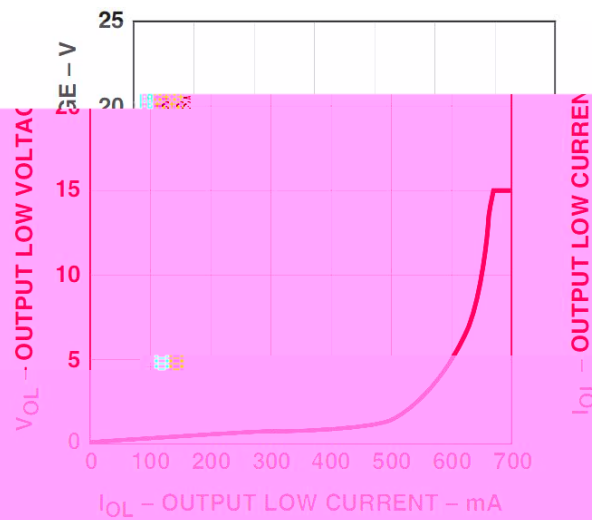


Figure 6. V_{OL} vs. I_{OL} .

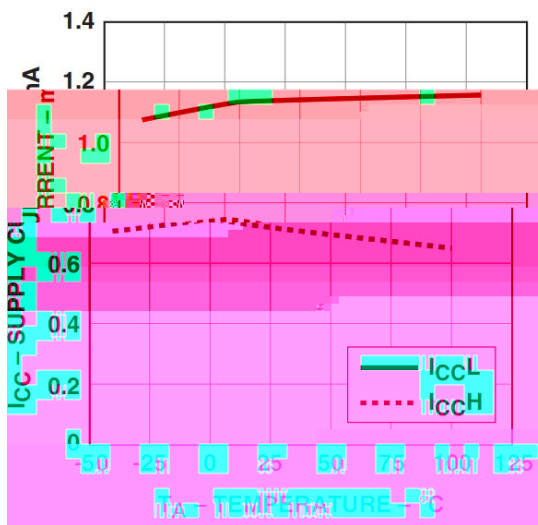


Figure 7. I_{cc} vs. Temperature.

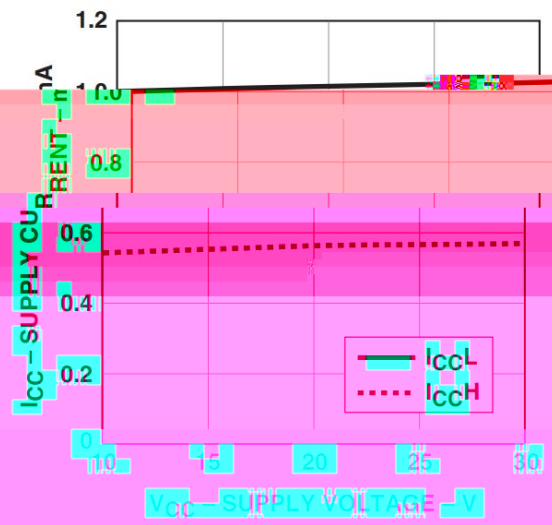


Figure 8. I_{cc} vs. V_{cc} .

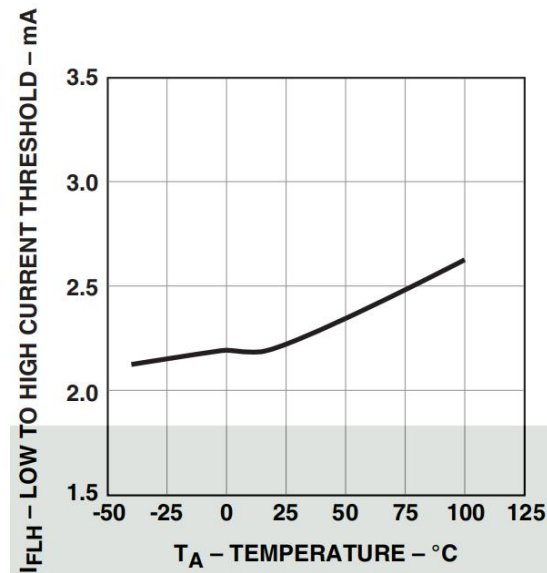


Figure 9. I_{FLH} vs. Temperature.

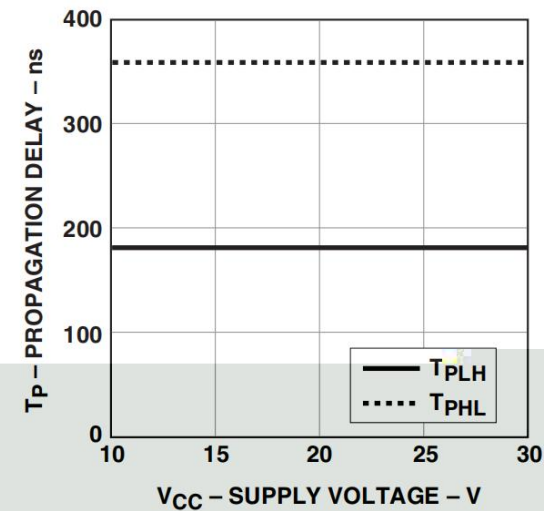


Figure 10. Propagation Delay vs. V_{cc} .

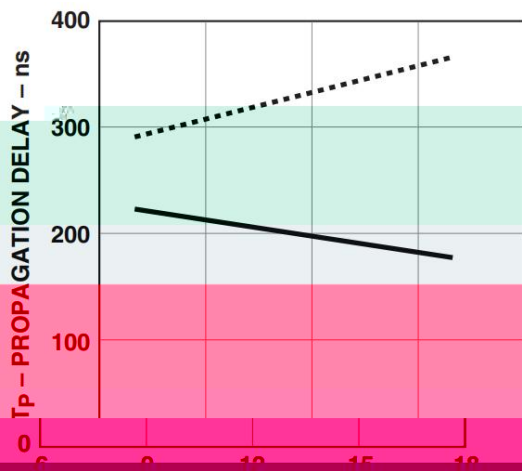


Figure 11. Propagation Delay vs. Temperature.

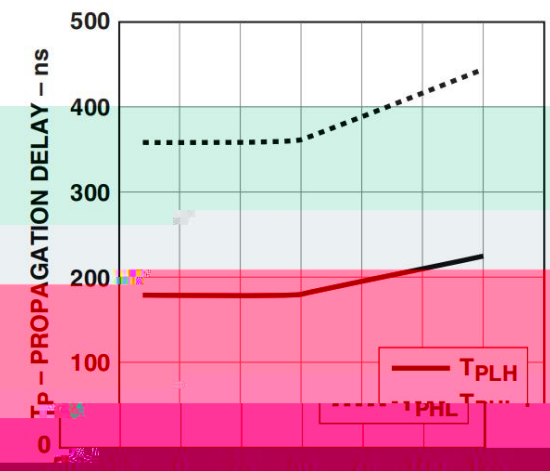


Figure 12. Propagation Delay vs. Temperature.

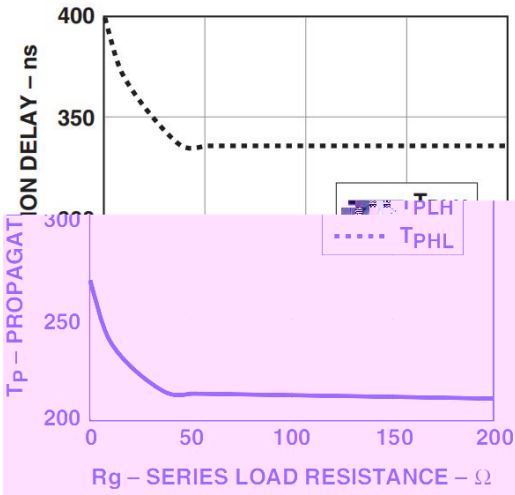


Figure 13. Propagation Delay vs. R_g

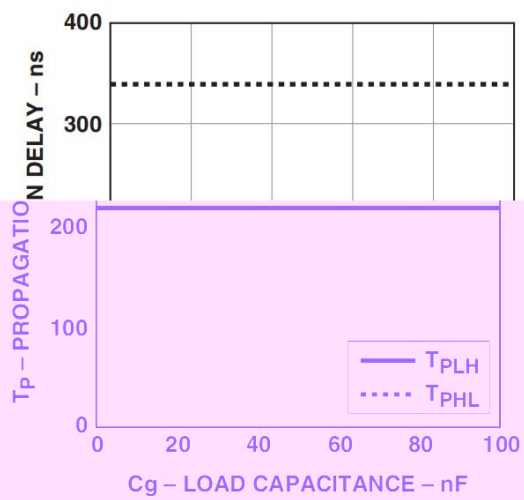
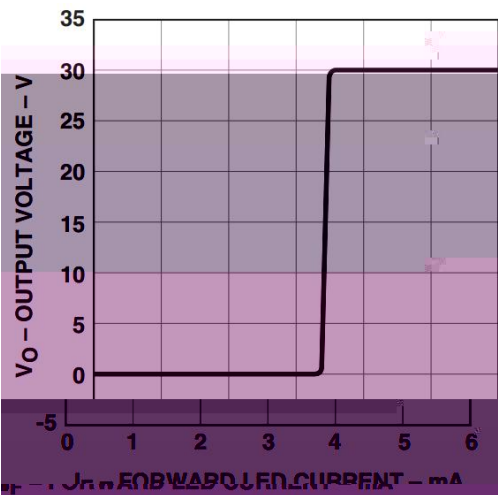


Figure 14. Propagation Delay vs. C_g



Transfer Characteristics.

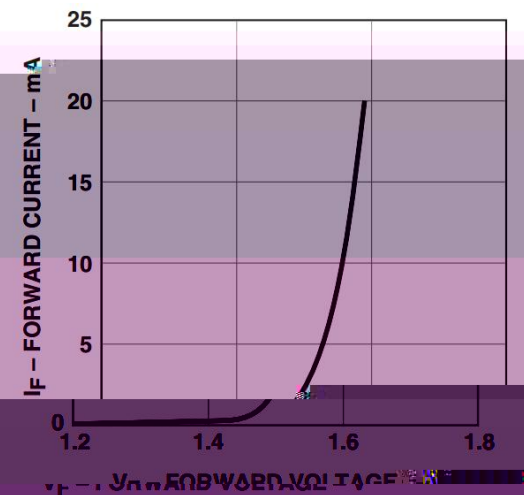


Figure 16. Input Current vs. Forward Voltage.

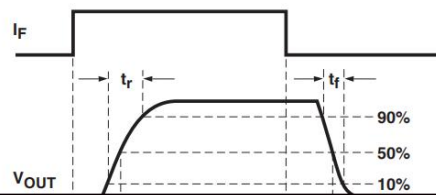
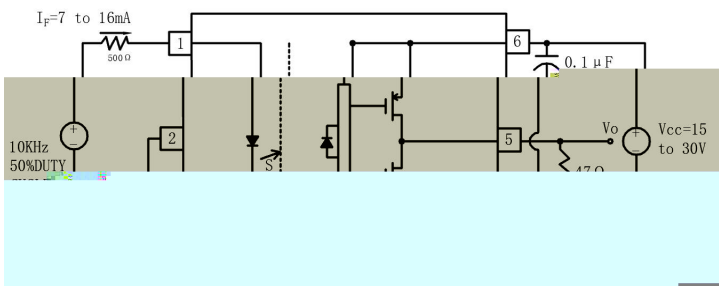


Figure 15.

